

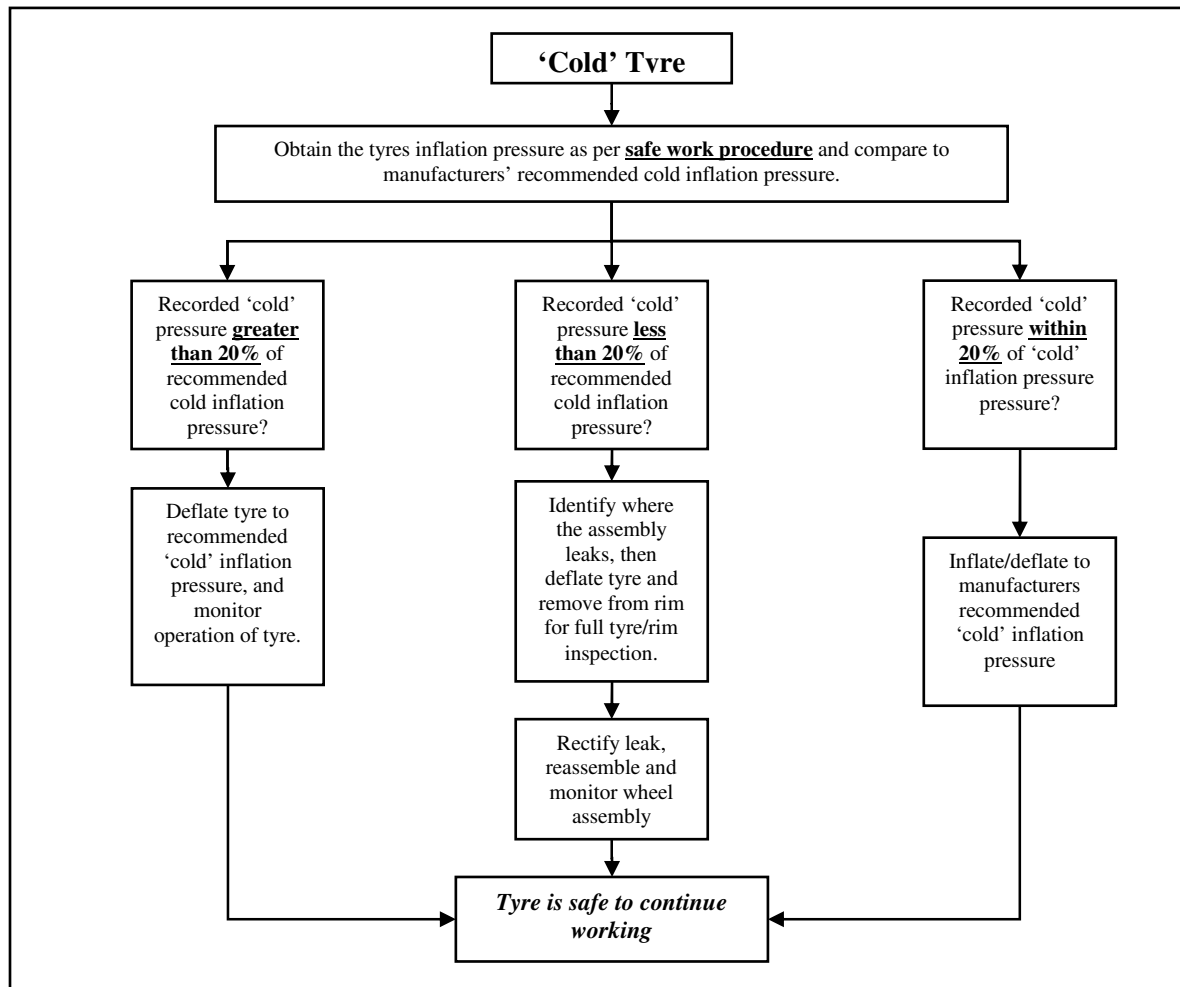


Safety Alert & Klinge Standing Order

Cold Tyre Inflation Pressure – Trigger Action Levels

Over and underinflation of tyres compared to their manufacturer recommended cold inflation pressure will cause damage to the tyre, and can also create considerable safety hazards if not reversed.

The following steps, shown in the flowchart below, are to be followed at all times should a wheel assembly be detected whose tyre inflation pressure is either **above or below 20%** of its recommended cold inflation pressure:



Tilman Rasche
Manager – Global Risk & Business Improvement

10/8/04 Safety Alert26 Tyre Pressure trigger levels incl disclaimer1.doc

‘Klinge Safe Tyres Produce More & Last Longer’

This material is for information only. We (Klinge & Co Pty Ltd) intend to bring the existence of potential problems to your attention and to inform you of solutions which we have adopted. We do not warrant that any solutions that we have adopted are infallible, nor do we recommend that you adopt same. If you are concerned about a potential problem and wish to implement a solution, then we recommend you carry out your own research and testing. Expert advice should be obtained before adopting any solution that we have adopted to ensure that such a solution is appropriate and suitable to your needs. Any information provided by us in this material or otherwise on this web site is not intended to create any sort of legal relationship between us and you, nor is it intended that you will rely upon it without obtaining proper professional advice. We will not be responsible for any loss and damage occasioned, including but not limited to damages for personal injuries or loss of business or other profits, by any person relying on information contained in this material or otherwise on this website. We do not guarantee that the information material or otherwise on the web site is accurate, reliable, definitive, complete or up to date. We may claim legal privilege and common interest privilege in relation to this material.