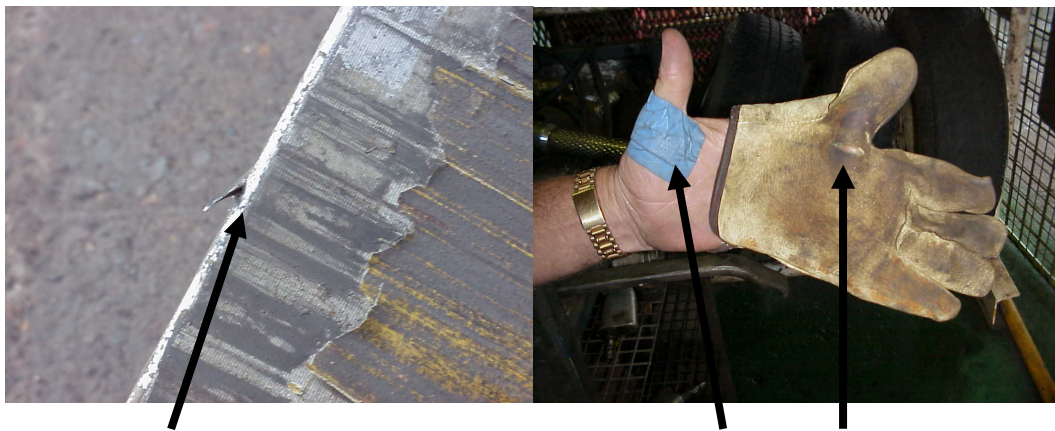




# Safety Alert

## Hazard Alert: Hand Safety

A tyre serviceman received a cut to the inside of his palm from a protruding steel bur while he was cleaning and inspecting rim components. The bur measured ~20mm \* 3mm and easily penetrated the person hand despite personal protective equipment (Rigger Gloves) being worn. The person was taken to the local medical centre for treatment.



Steel Rim Bur

Bur cut through Rigger Glove into person's hand

To avoid such injuries, please ensure the following points:

- All personal must be aware of potential burs and other sharp edges on **any rim component, tyres and tools.**
- Before commencing any work where you could sustain injuries to your hands, you must ensure you are wearing the correct personal protective equipment (PPE) for the task and that the PPE itself is in good order.
- Inspect the item it carefully for such hazards - if you find any burs, sharp edges etc., remove them using the correct tools and procedures.

Discuss this information and include this Hazard Alert as a safety point at your next meeting.

Hand safety is important factor in all tasks we conduct in and outside workshops, and at home.

Tilman Rasche  
Manager – Global Risk and Business Improvement

20/06/03 Safety Alert10 Handsafety incl. disclaimer1.doc

### *'Klinge Safe Tyres Produce More & Last Longer'*

*The information provided on this website is intended for information only and of bringing the existence of potential problems to your attention and to advise you of solutions which we have adopted. We do not warrant that any solutions that we have adopted are infallible, nor do we recommend that you adopt same. If you are concerned about a potential problem and wish to implement a solution, then we recommend you carry out your own research and testing. Expert advice should be obtained before adopting any solution that we have adopted to ensure that such a solution is appropriate and suitable to your needs. Any information provided on this web site is not intended to create any sort of legal relationship between Klinge & Co Pty Ltd and you, nor is it intended that you will rely upon it without obtaining proper professional advice. Klinge & Co Pty Ltd will not be responsible for any loss and damage occasioned, including but not limited to damages for personal injuries or loss of business or other profits, by any person relying on information contained in this website. Klinge & Co does not guarantee that the information on the web site is accurate, reliable, definitive, complete or up to date. Klinge Group may claim legal privilege and common interest privilege in relation to this material.*